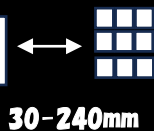


TV WALL BRACKET SETUP GUIDE



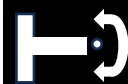
10" - 26"



VESA
Up to
100*100mm



180°



±15°



max 10Kg



pencil



drill



screwdriver



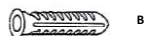
spanner

Safety Information

1. This product includes some small parts; if swallowed they could cause suffocation. Please keep away from children.
2. To avoid the risk of property damage, do not begin installation until you have finished reading this guide and understand how to install this Wall Mount. If you don't understand any of the installation process, please contact a qualified installer.
3. The wall to which this wall mount is attached must be able to support the combined load of the Wall Mount and the TV. The Wall Mount's weight limit assumes that the supporting wall is appropriate to hold a 10kg load.
4. Check the Wall Mount attachment every couple of months, to make sure it is still securely attached.
5. This Wall Mount must be installed on a wall with timber studs or a solid brick/concrete wall. If installed on a timber stud wall, make sure the mounting screws are anchored into the centre of the studs. If installed on a brick or concrete wall, make sure the mounting screws are in the solid section of the brick / concrete. For other wall types, different screws may be required. If necessary please contact a qualified installer.
6. This product is for indoor use only.



Lag bolt 6 x 50(x3)



Concrete anchor 10x48(x3)



Washer Ø5xØ11(x4)



Screw M4x12mm(x3)



Screw M5x12mm(x3)

INSTALLATION

1

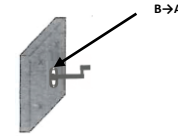


Mark drill hole positions with pencil

BRICK CONCRETE WALL

2

Attach mounting arm to wall

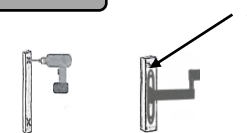


(1) Suitable for walls made from stone, concrete, hollow blocks. Pre-drill holes to max 10mm in dia.

WOOD BOARD/STUD



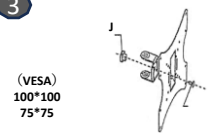
FOR WOOD STUD



FOR WOOD STUD

(2) Suitable for solid wood. Do not use any raw plugs. Pre-drill holes to max 5mm in dia.

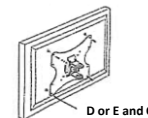
3



(VESA)
100*100
75*75

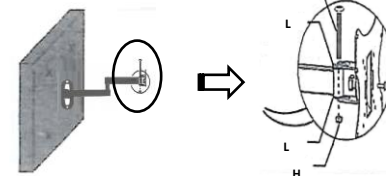
4

Attach mounting plate to rear of TV.



5

Secure mounting plate to mounting arm with included nut and bolt.



Before drilling holes in wall, check that the wall bracket can be attached to your TV

Important: Do not use this Wall Bracket with TVs that weigh more than 10kg.