

-86°C ULT Freezer

DW-86L579BP



GENERAL

Storage Capacity(L/Cu.Ft)		579/20.4
Temperature Range(°C)		-40~-86
Noise (dB(A))		43.5
Net/Gross Weight (kg)		325/355
Exterior Dimension (W×D×H)	mm	895*998*1980
	in	35.4*39.3*78.0
Interior Dimension (W×D×H)	mm	620*716*1310
	in	24.4*28.2*51.6

ENVIRONMENTAL & ELECTRICAL DATA

Electrical Power (V/HZ)		100~230/50/60
Power(W)		1100
Power Consumption(kW-hr/day)		7.5
Electrical Current (A)		6
Building Supply Rating (A)		16
Power Lead Length (m)		2.5
Heat Rejection (BTU/day)		25590
Ambient Temperature(°C)		10 - 32

REFRIGERATION CONFIGURATION

Refrigeration System Type		HC
Compressor Type/Brand/Number		Hermetic Reciprocating Type / SECOP/ 2
Compressor Capacity (W)		950+950
Evaporator Type		Copper Tube Evaporator
Defrost Method		Manual
Refrigerant Charge/Flammable		R290 in 1st Stage / R170 in 2nd Stage/Flammable

CONTROLLER/ELECTRICAL SYSTEM FEATURES

Controller Level	Top
Power Switch	16A
Controller Type	Microprocessor
Setpoint Security	Y
Controller Sensor	PT100
Remote Alarm Terminals	Remote Alarm Port , RS485
Adjustable High/Low Temp Alarms	Y
Auto Voltage Safeguard	Y

CONSTRUCTION

Insulation	VIP+CFC Free Foaming Agent
Exterior Door Seal	Four Seal On The Outside Door Seal Strip
Interior Door Seal	One Seal On The Interior Door Seal Strip
Shelves/Capacity/Dims/Material	3 stainless steel adjustable shelves with dimension 596*657 mm(W*D), max capacity per shelf:80kg, 176.5 lbs
Casters	Y/4
Exterior Material	Color Coating Steel Plate
Interior Material	Color Coating Steel Plate
Door Thickness (mm)	90
Cabinet Thickness (mm)	90
Inner Door	Four Solid Door
Condenser Type	Fin condenser
Fan Brand	SUNON
Back Up Battery For Alarm Functions	Support high/low temperature, power failure, door open, sensor failure, high ambient temperature, hot condenser and low battery alarms

PERFORMANCE

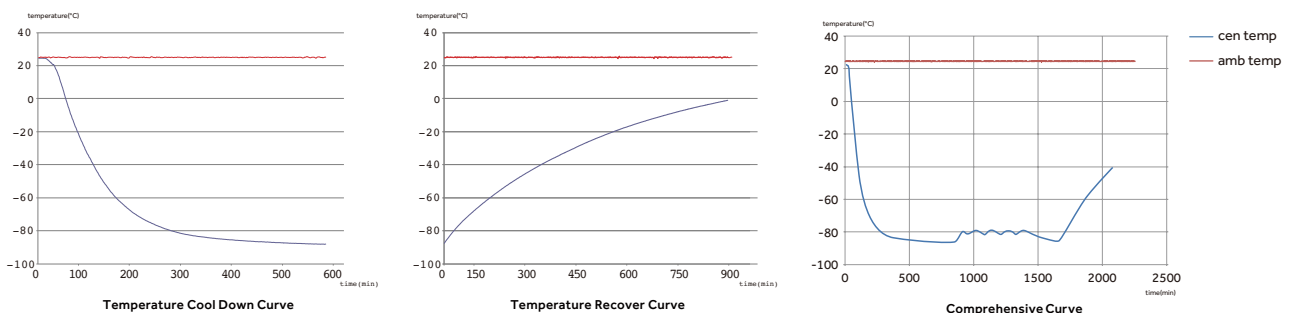
Temperature Uniformity (°C)	±3
Temperature Accuracy (°C)	0.1
Pull Down Time (25°C ambient to -80°C) mins	280
Warm Up Time (25°C ambient -80°C to -50°C) mins	280
1 Min Door Open Recovery Time (ambient 25°C,running temp -80°C,recover to -75°C after door opening)mins	40

*Out door and four inner door opening for 1 mins,no -load test condition

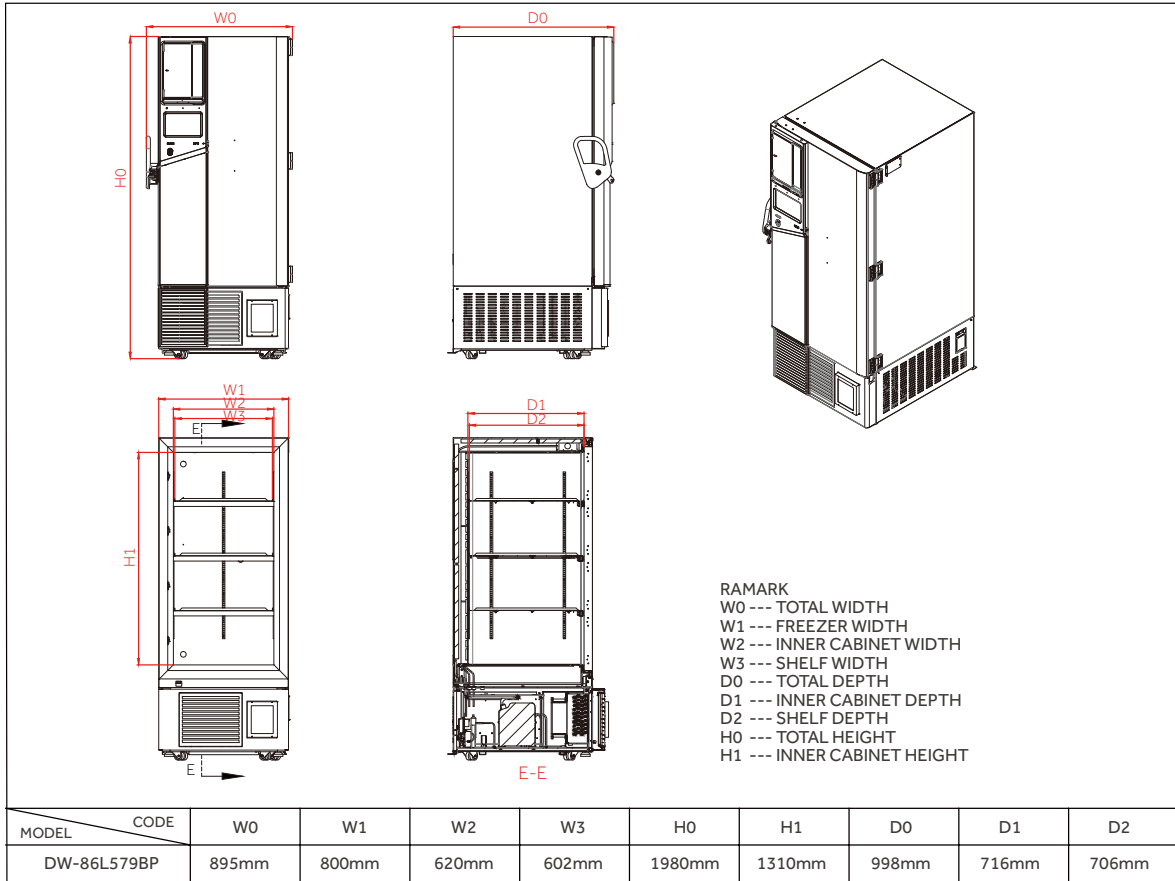
CERTIFICATE

CE,UL

TYPICAL PERFORMANCE CHARACTERISTICS IN 25°C AMBIENT

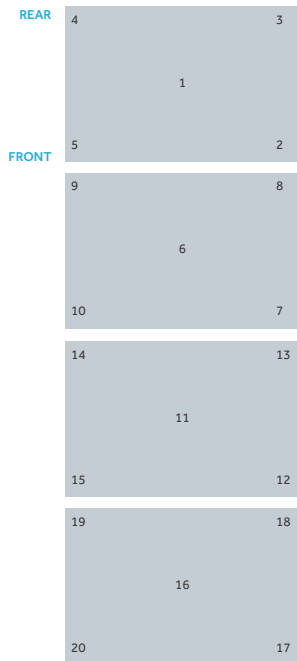


PRODUCT DIMENSION DRAWINGS

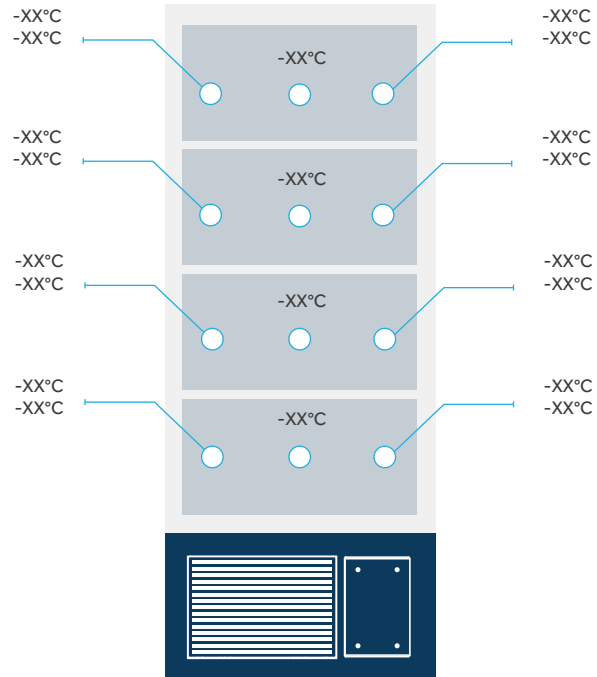


TYPICAL CABINET TEMPERATURE MAP

Top view of shelves



Front view of shelves



°C	1	2	3	4	5	6	7	8	9	10
Max.	-78.5	-78.2	-77.9	-78.6	-79.5	-80.0	-80.1	-80.2	-80.2	-80.3
Min.	-80.4	-81.5	-80.2	-80.7	-81.5	-82.5	-81.3	-81.9	-83.0	-82.1
Avg.	-79.5	-79.9	-79.1	-79.7	-80.5	-81.3	-80.7	-81.1	-81.8	-81.2

°C	11	12	13	14	15	16	17	18	19	20
Max.	-81.3	-80.8	-81.0	-80.9	-81.1	-80.6	-79.8	-80.2	-80.1	-79.9
Min.	-82.9	-82.2	-83.0	-82.8	-82.6	-82.2	-81.6	-81.7	-82.7	-81.6
Avg.	-82.1	-81.5	-82.0	-81.9	-81.9	-81.4	-80.7	-81.0	-81.4	-80.8

*Ambient temp. 25°C, setting temp. -80°C, cabinet stably running temp. -80°C

発売元

株式会社ビットストロング 画像営業部
<https://www.bitstrong.co.jp/>
 東京都文京区小石川2-25-16 パーソナルハウス 2F
 TEL:03-3868-5605 FAX:03-3868-5616

担当：中村、藤野
 また下記Webフォーム
<https://www.bitstrong.co.jp/contact/>
 お問い合わせはこちらから
imaging@bitstrong.co.jp