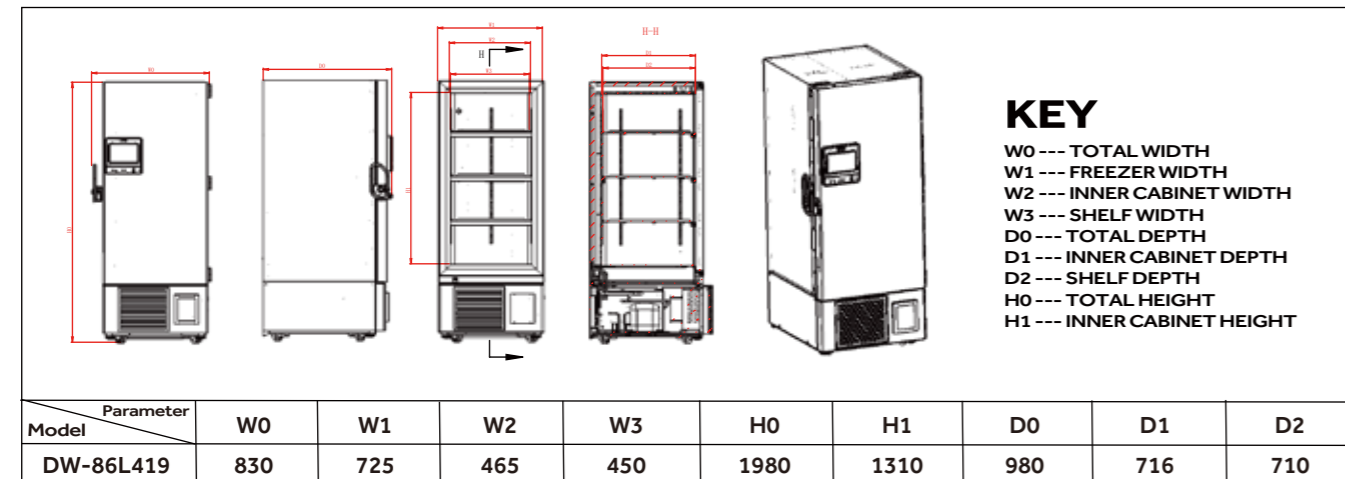
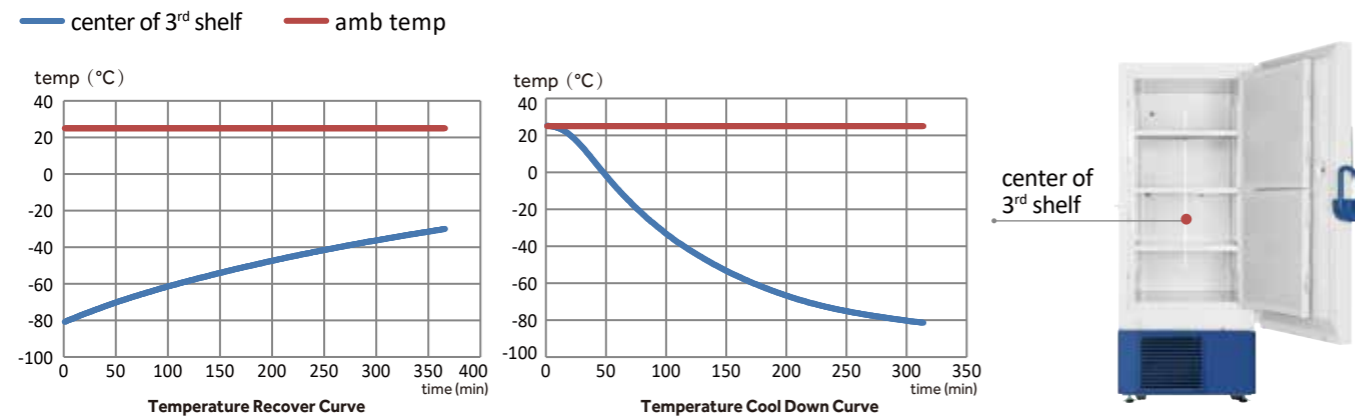


ULT Freezer DW-86L419

Typical Performance Characteristics in 25°C Ambient



Specifications

DW-86L419

| | | | | | | |
|-------------------------------|----------------------------|----------------|----------------|--------------------------|----------------------------|----------|
| Technical Data | Cabinet Type | Upright | | Functions | High/Low Temperature | Y |
| | Climate Class | N | | | Hot Condenser | Y |
| | Cooling Type | Direct cooling | | | Power Failure | Y |
| | Defrost Mode | Manual | | | High/Low Voltage | Y |
| | Refrigerant | HC | | | Sensor Error | Y |
| Performance | Sound Level (dB (A)) | 47 | | Low Battery | Y | |
| | Cooling Performance (°C) | -86 | | High Ambient Temperature | Y | |
| Control | Temperature Range (°C) | -40 ~ -86 | | Door Ajar | Y | |
| | Controller | Microprocessor | | Caster | Y | |
| Electrical Data | Display | LCD | | Foot | Y | |
| | Power Supply (V/Hz) | 220 ~ 240/50 | | Porthole | Y/2 | |
| | Power (W) | 800 | | Shelves/Inner Doors | 3/2 | |
| Dimensions | Electrical Current (A) | 5 | | USB Interface | Y | |
| | Capacity (L/Cu.Ft) | 419/14.8 | | Remote Alarm | Y | |
| | Net/Gross Weight (approx) | kg | 255/286 | | 5V Power Supply Port | Y |
| | | lbs | 562.2/630.5 | | Temperature Chart Recorder | Optional |
| | Interior Dimension (W*D*H) | mm | 465*716*1310 | | RS485 Port | Standard |
| | | in | 18.3*28.2*51.6 | | CO2 Backup System | Optional |
| | Exterior Dimension (W*D*H) | mm | 830*980*1980 | | LN2 Backup System | Optional |
| in | | 32.7*38.6*78.0 | | Other | Certification | |
| Packing Dimension (W*D*H) | mm | 897*1078*2135 | | | | |
| Container Load (20'/40'/40'H) | in | 35.3*42.4*84.1 | | | | |
| | | 12/26/26 | | | | |

ULT Freezer

DW-86L419

Making Your Lab More Intelligent and Reliable

Intelligent Inventory Management

10-inch touchscreen with single version inventory management allows users to easily record item locations, entry and exit records for intelligent stock management.

Safe and Reliable Storage

Temperature uniformity $\leq \pm 4^\circ\text{C}$, equipped with an intelligent temperature monitoring system, real-time temperature data monitoring function and multiple safety alarm system.

Energy Saving and Environmentally Friendly

The optimized hydrocarbon refrigeration system is more environmentally friendly and uses significantly less energy than older technologies, saving up to 30% on electricity. ENERGY STAR certified.



発売元

株式会社ビットストロング 画像営業部
<https://www.bitstrong.co.jp/>
 東京都文京区小石川2-25-16 パーソナルハウス 2F
 TEL:03-3868-5605 FAX:03-3868-5616
 担当: 中村、藤野
 また下記Webフォーム
<https://www.bitstrong.co.jp/contact/>
 お問い合わせはこちらから
imaging@bitstrong.co.jp

Ergonomic Design



Narrow Door Design

The freezer can pass through a 750mm wide door when the freezer door is open.



New Handle Design

Adopting exclusive slide design, easy to open and close the door



Pressure Equalization Port

Equipped with pressure equalization port for easy opening



Porthole

Two portholes as standard, allows for independent testing of cabinet temperature



Filter Design

Tool-free removable filter, making it easy and quick to clean the filter



Detachable Inner Door Design

Tool-free detachable inner door, ensuring easy and quick defrost



Product Advantages

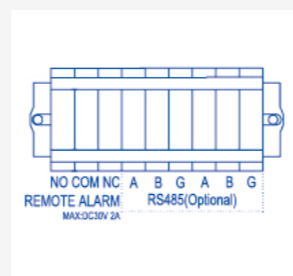


Large Intelligent LCD Screen Visual Management

10-inch high-performance LCD capacitive screen, sensitive touch operation; intuitive display of inside temperature, ambient temperature, input voltage and other data and temperature curves.

Equipped with Multiple Interfaces

- Standard USB interface, capable of storing data for 10 years
- Standard remote alarm terminal and RS485 port



Multiple Options for Safe Management and Control Systems

Password lock as standard with optional fingerprint module, face recognition and punch card system. Multi-person management control option to ensure safe and secure storage.

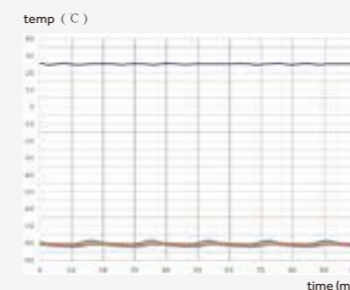
Optional IoT System Real-time Monitoring

The IoT APP can monitor the operating status of the equipment anytime and anywhere. The unit is equipped with self-diagnose system faults and alarm functions, ensuring sample safety.



Safe and Secure with Multiple Alarms

Designed and manufactured with multiple alarm functions, such as high temperature alarm, low temperature alarm, sensor failure alarm, power failure alarm, low battery alarm, door ajar alarm and high ambient temperature alarm to name a few.



Precise Temperature Control ensures Safe Storage

The setting temperature is adjustable between -40 ~ -86°C, monitoring temperature curves in real time, and the temperature safety alarm system is the latest design and start-of-the-art technology.

High-efficiency and Energy-saving Compressor

Adopting high-efficiency HC compressor and optimized refrigeration system, for safe and reliable cold storage of your samples.

